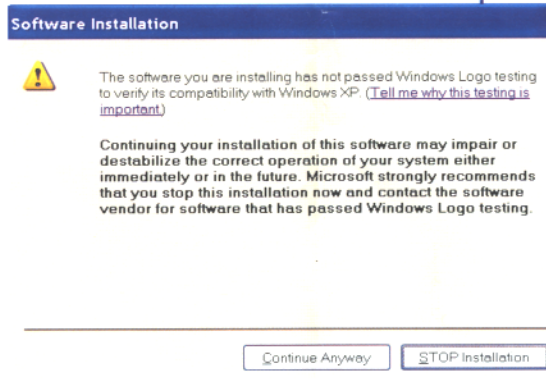
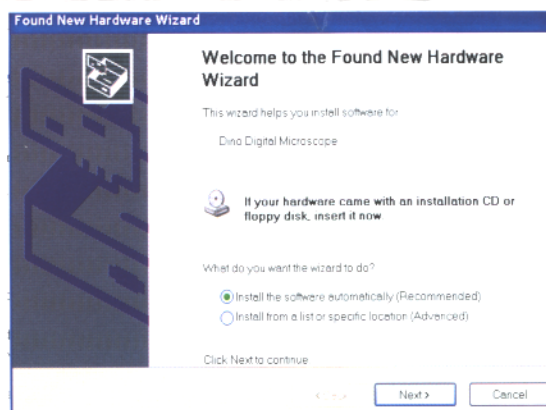


# Quick Installation Guide- Window XP as example

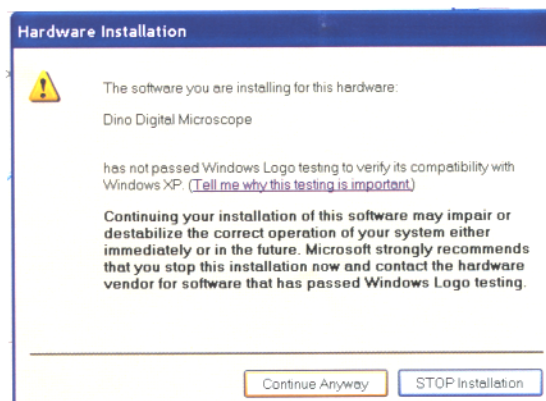
1. Power on PC and place installation CD into CD-ROM driver.
2. DO NOT connect USB cable of Dino-Lite Digital Microscope to PC before driver installation.
3. The installation program should be started automatically after the installation CD is placed into CD-ROM.
4. Click on Driver Installation, and then click "Next" to continue.
5. When the "Software Installation" warning message appears, click "Continue Anyway".



6. Click "Finish" when the InstallShield Wizard has successfully installed Dino Digital Microscope Driver.
7. Plug USB Cable of Dino-Lite Digital Microscope to PC, a "Found New Hardware Wizard" will then appear. Click "Next" to continue.



8. When the "Software Installation" warning message appears, click "Continue Anyway". Click "Finish" to complete the installation.



9. Executing the DinoCapture software by selecting "Start" → "All programs" → "Dino-Lite Digital Microscope".
10. It is suggested to close DinoCapture before disconnecting Dino-Lite Digital Microscope from PC.